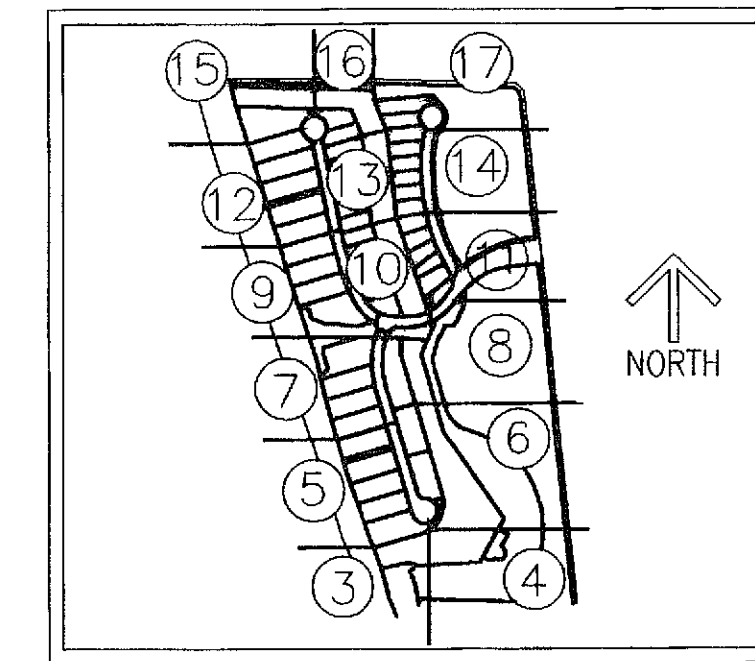


THIS INSTRUMENT PREPARED BY
DAVID P. LINDLEY
OF
CAULFIELD and WHEELER, INC.
SURVEYORS - ENGINEERS - PLANNERS
7301-A WEST PALMETTO PARK ROAD, SUITE 100A
BOCA RATON, FLORIDA 33433 - (561)392-1991
JANUARY- 2010

PARCEL 32, P.U.D.

A PLANNED UNIT DEVELOPMENT
BEING A PLAT OF A PORTION OF THE NORTHEAST ONE-QUARTER OF
SECTION 29, TOWNSHIP 41 SOUTH, RANGE 43 EAST,
PALM BEACH COUNTY, FLORIDA

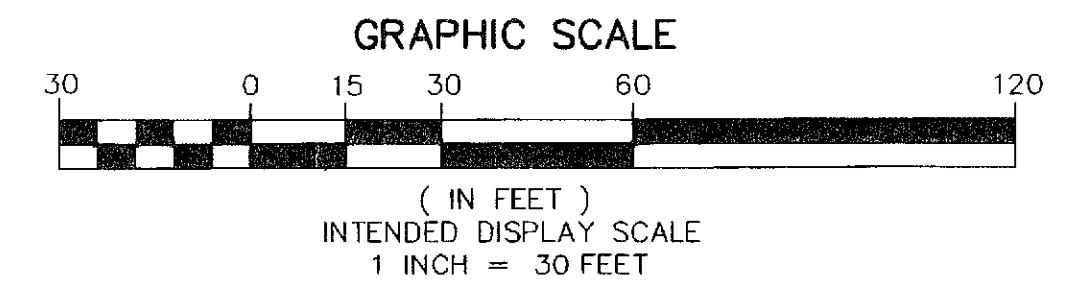
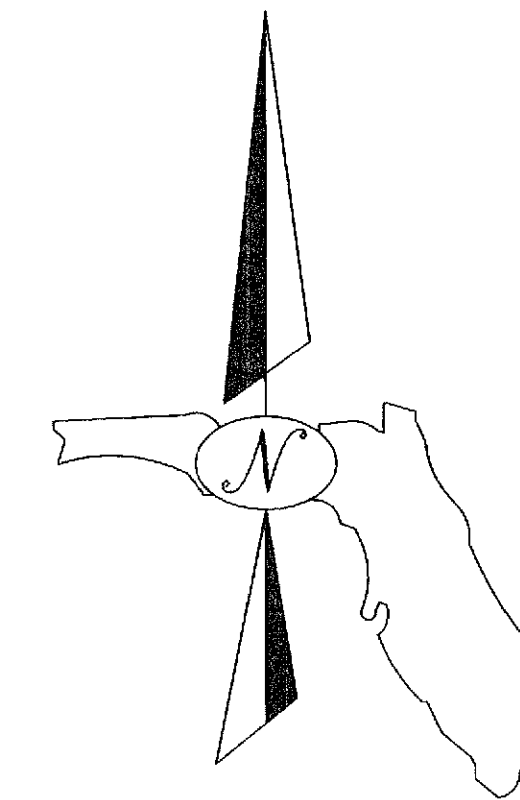
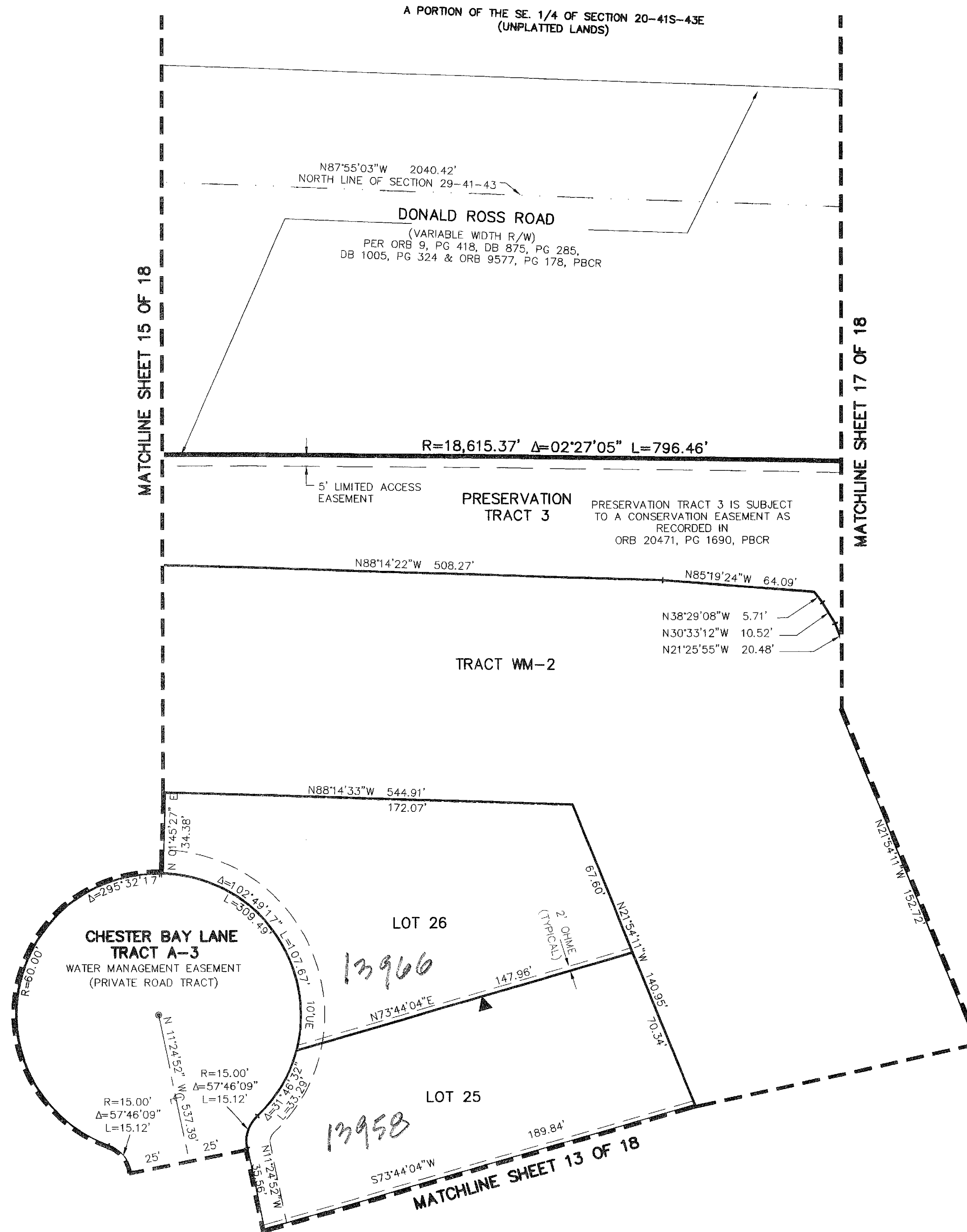


SHEET INDEX
NOT TO SCALE

STATE OF FLORIDA
COUNTY OF PALM BEACH
THIS PLAT WAS FILED FOR
RECORD AT _____ M.
THIS _____ DAY OF _____
A.D. 20____ AND DULY RECORDED
IN PLAT BOOK _____ ON
PAGES _____ AND _____

SHARON R. BOCK
CLERK AND COMPTROLLER

BY: _____
DEPUTY CLERK



NOTE:
PRESERVATION TRACTS 1, 2, 3, 4, 5 AND 6 AS SHOWN HEREON, ARE HEREBY DEDICATED TO NORTHERN PALM BEACH COUNTY IMPROVEMENT DISTRICT (NIPBID), ITS SUCCESSORS AND ASSIGNS, FOR CONSERVATION AREAS AND IS THE PERPETUAL MAINTENANCE OBLIGATION OF SAID NIPBID, ITS SUCCESSORS AND ASSIGNS, WITHOUT RECOURSE TO PALM BEACH COUNTY, AS PER ARTICLE 14.C, OF THE PALM BEACH COUNTY LAND DEVELOPMENT CODE, THE TRACTS ARE SUBJECT TO A CONSERVATION EASEMENT RECORDED IN OFFICIAL RECORDS BOOK 20471, PAGES 1690 THROUGH 1744 OF THE PUBLIC RECORDS OF PALM BEACH COUNTY, FLORIDA.